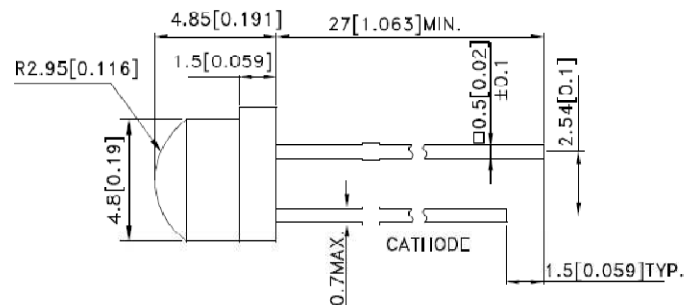
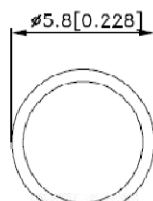


New Wide-view LED L-9294 series wide viewing angle of 130°



Features

Wide viewing angle 130°
Diameter = 4,8 / 5,8 mm
Lens height = 4,85 mm
Transparent lens
Low power consumption
RoHS compliant



Partnumber	Emitting colour	Lens type	Iv (mcd) @20mA		Viewing angle
			min.	typ.	
L-9294SURCK	630 nm hyper-red (AlGaInP)	water clear	180	450	130°
L-9294SECK	601 nm orange (AlGaInP)	water clear	110	400	130°
L-9294SEC-J3	625 nm reddish-orange	water clear	650	1600	130°
L-9294CGCK	570 nm green (AlGaInP)	water clear	36	150	130°
L-9294VGC-A	525 nm green (InGaN)	water clear	180	550	130°
L-9294VGC-Z	535 nm green (InGaN)	water clear	480	1300	130°
L-9294SYCK	590 nm yellow (AlGaInP)	water clear	70	300	130°
L-9294SYC-J3	588 nm yellow AlGaInP)	water clear	280	530	130°
L-9294PBC-A	470 nm blue (InGaN)	water clear	50	180	130°
L-9294PBC-Z	465 nm blue (InGaN)	water clear	180	650	130°